

TECHNICAL MANUAL

**ORGANIZATIONAL, DIRECT SUPPORT,
AND
GENERAL SUPPORT MAINTENANCE
(INCLUDING DEPOT MAINTENANCE REPAIR PARTS
AND SPECIAL TOOLS)**

FOR

**TEST SET, TS-3565/TRS-2
(NSN 6625-01-075-0046)**

HEADQUARTERS, DEPARTMENT OF THE ARMY

9 DECEMBER 1980

**ORGANIZATIONAL, DIRCET SUPPORT,
 AND
 GENERAL SUPPORT MAINTENANCE
 REPAIR PARTS AND SPECIAL TOOLS LISTS
 (INCLUDING DEPOT MAINTENANCE REPAIR PARTS
 AND SPECIAL TOOLS)
 FOR
 TEST SET TS-3565/TRS-2
 (NSN 6625-01-075-0046)**

Current as of 25 June 1980

REPORTING ERRORS AND RECOMMENDED IMPROVEMENTS

You can help improve this manual. If you find any mistakes or if you know of a way to improve the procedures, please let us know. Mail your letter, DA Form 2028 (Recommended Changes to Publications and Blank Forms), or DA Form 2028-2 located in the back of this manual direct to: Commander, US Army Communications and Electronics Materiel Readiness Command, ATTN: DRSEL-ME-MQ, Fort Monmouth, New Jersey 07703.

In either case a reply will be furnished direct to you.

Table of Contents

		Page	Illus Figure
Section	I. Introduction.....	1	
	11. Repair Parts List.....	5	
Group	00 Test Set TS-3565/TRS-2.....	5	1
	01 Panel Assembly, Test Set SM-D-783452.....	7	2
	0101 Circuit Card Assembly, Test Set SM-D-783475.....	11	3
	02 Cable Assembly, Signal Generator SMD783492.....	16	4
	03 Cable Assembly, Wire Module SM-D-783493.....	16	4
	04 Case, Test Set SM-D-783486.....	18	5
Section	III. Special Tools List (Not applicable)		
	IV. National Stock Number and Part Number		
	Index.....	20	

SECTION I INTRODUCTION

1. Scope

This manual lists spares and repair parts; special tools; special test, measurement, and diagnostic equipment (TMDE), and other special support equipment required for performance of organizational, direct support, and general support maintenance of the TS-3565/TRS-2. It authorizes the requisitioning and issue of spares and repair parts as indicated by the source and maintenance codes.

2. General

This Repair Parts and Special Tools List is divided into the following sections:

a. Section II. Repair Parts List. A list of spares and repair parts authorized for use in the performance of maintenance. The list also includes parts which must be removed for replacement of the authorized parts. Parts lists are composed of functional groups in numeric sequence, with the parts in each group listed in figure and item number sequence.

b. Section III. Special Tools List. Not applicable.

c. Section IV. National Stock Number and Part Number Index. A list, in National item identification number (NIIN) sequence, of all National stock numbers (NW) appearing in the listings, followed by a list, in alphameric sequence, of all part numbers appearing in the listing. National stock numbers and part numbers are cross-referenced to each illustration figure and item number appearance.

3. Explanation of Columns

a. Illustration. This column is divided as follows:

(1) *Figure number.* Indicates the figure number of the illustration on which the item is shown.

(2) *Item number.* The number used to identify item called out in the illustration.

b. Source, Maintenance, and Recoverability (SMR) Codes.

(1) *Source code.* Source codes indicate the manner of acquiring support items for maintenance, repair, or overhaul of end items. Source codes are entered in the first and second positions of the Uniform SMR Code format as follows:

<i>Code</i>	<i>Definition</i>
PA	Item procured and stocked for anticipated or known usage.
AF	Item to be assembled at direct support maintenance level.

AD—Item to be assembled at depot maintenance level.
XD—A support item that is not stocked. When required, item will be procured through normal supply channels.

NOTE

Cannibalization or salvage may be used as a source of supply for any items source coded above except those coded XA and aircraft support items as restricted by AR 700-42.

(2) *Maintenance code.* Maintenance codes are assigned to indicate the levels of maintenance authorized to USE and REPAIR support items. The maintenance codes are entered in the third and fourth positions of the Uniform SMR Code format as follows:

(a) The maintenance code entered in the third position will indicate the lowest maintenance level authorized to remove, replace, and use the support item. The maintenance code entered in the third position will indicate one of the following levels of maintenance:

<i>Code</i>	<i>Application/Explanation</i>
F	Support item is removed, replaced, used at the direct support level.
D	Support items that are removed, replaced, used at the depot, mobile depot, specialized repair activity only.

(b) The maintenance code entered in the fourth position indicates whether the item is to be repaired and identifies the lowest maintenance level with the capability to perform complete repair (i.e., all authorized maintenance functions). This position will contain one of the following maintenance codes:

<i>Code</i>	<i>Application/Explanation</i>
F	The lowest maintenance level capable of complete repair of the support item is the direct support level.
D	The lowest maintenance level capable of complete repair of the support item is the depot level.
Z	Nonreparable. No repair is authorized.

(3) *Recoverability code.* Recoverability codes are assigned to support items to indicate the disposition action on unserviceable items. The recoverability code is entered in the fifth position of the Uniform SMR Code format as follows:

<i>Recoverability codes</i>	<i>Definition</i>
Z	Nonreparable item. When unserviceable, condemn and dispose at the level indicated in position 3.

F—Reparable item. When uneconomically reparable, condemn and dispose at direct support level.

D—Reparable item. When beyond lower level repair capability, return to depot. Condemnation and disposal not authorized below depot level.

L—Reparable item. Repair, condemnation, and disposal not authorized below depot/specialized repair activity level.

c. *National Stock Number*. Indicates the National stock number assigned to the item and will be used for requisitioning purposes.

d. *Part Number*. Indicates the primary number used by the manufacturer (individual, company, firm, corporation, or Government activity), which controls the design and characteristics of the item by means of its engineering drawings, specifications, standards, and inspection requirements to identify an item or range of items.

NOTE

When a stock numbered item is requisitioned, the repair part received may have a different part number than the part being replaced.

e. *Federal Supply Code for Manufacturer (FSCM)*. The FSCM is a 5-digit numeric code listed in SB 708-42 which is used to identify the manufacturer, distributor, or Government agency, etc.

f. *Description*. Indicates the Federal item name and, if required, a minimum description to identify the item.

g. *Unit of Measure (U/M)*. Indicates the standard of the basic quantity of the listed item as used in performing the actual maintenance function. This measure is expressed by a two-character alphabetical abbreviation (e.g., ea, in, pr, etc). When the unit of measure differs from the unit of issue, the lowest unit of issue that will satisfy the required units of measure will be requisitioned.

h. *Quantity Incorporated in Unit*. Indicates the quantity of the item used in the breakout shown on the illustration figure, which is prepared for a functional group, subfunctional group, or an assembly.

4. Special Information

a. Detailed assembly instructions for items source coded to be assembled are found in TM 11-6625-2784-

14. Assembly components are listed immediately following the item to be assembled.

b. The following publication pertains to the TS-3565/TRS-2 and its components:

TM 11-6625-2784-14, Test Set TS-3565/TRS-2

c. National stock numbers (NSN'S) that are missing from P source coded items have been applied for and will be added to this TM by future change/revision when they are entered in the Army Master Data File (AMDF). Until the NSN'S are established and published, submit exception requisitions to: Commander, US Army Communications and Electronics Materiel Readiness Command, ATTN: DRSEL-MM, Fort Monmouth, New Jersey 07703 for the part require to support your equipment.

5. How to Locate Repair Parts

a. When National stock number of part number is unknown.

(1) *First*. Using the table of contents, determine the functional group within which the item belongs. This is necessary since illustrations are prepared for functional groups and listings are divided into the same groups.

(2) *Second*. Find the illustration covering the functional group to which the item belongs.

(3) *Third*. Identify the item on the illustration and note the illustration figure and item number of the item.

(4) *Fourth*. Using the Repair Parts Listing, find the figure and item number noted on the illustration.

b. 'When National stock number or part number is known.

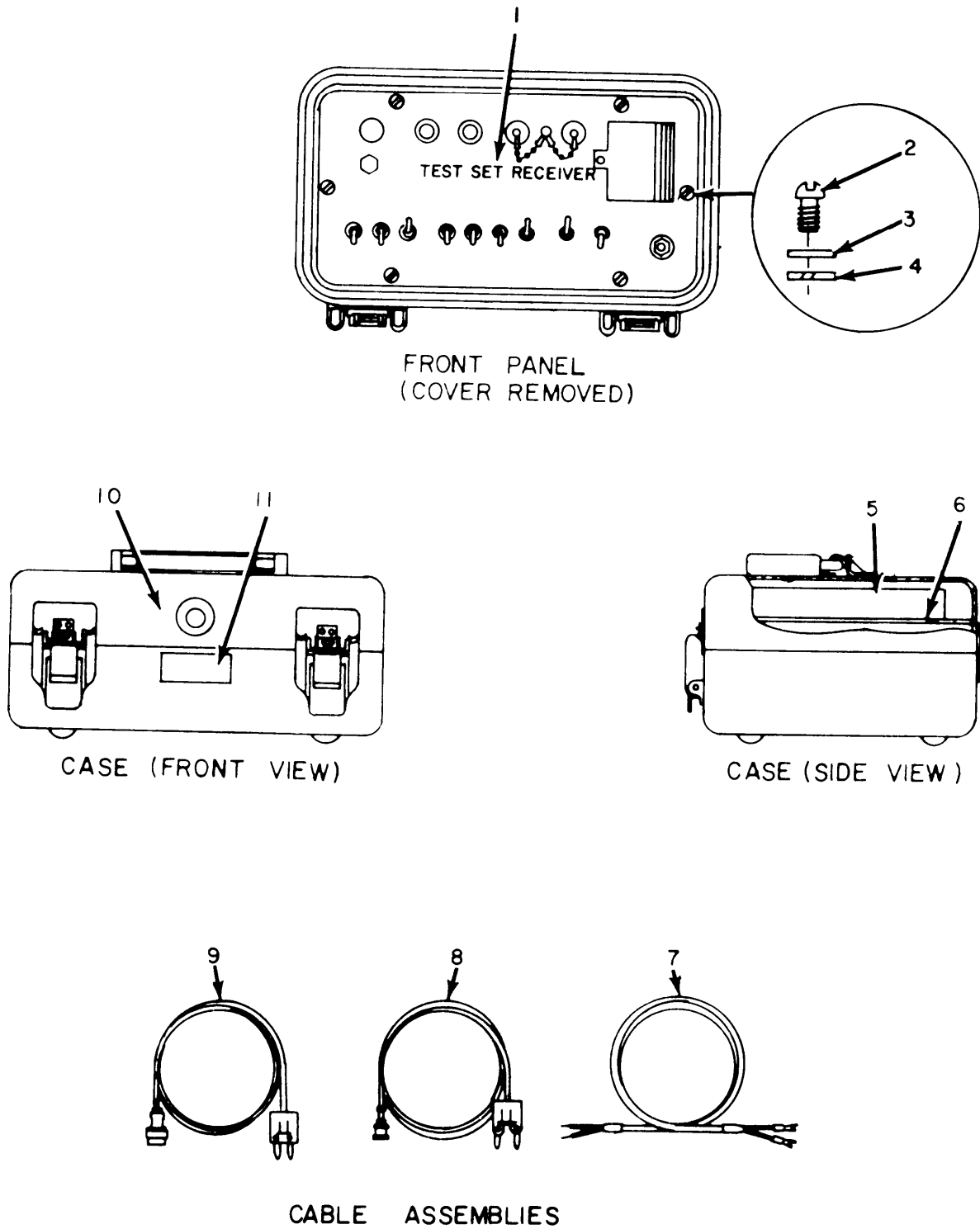
(1) *First*. Using the Index of National Stock Numbers and Part Numbers, find the pertinent National stock number or part number. This index is in NIIN sequence followed by a list of part numbers in alphameric sequence, cross-referenced to the illustration figure number and item number.

(2) *Second*. After finding the figure and item number, locate the figure and item number in the repair parts list.

6. Abbreviations

Not applicable,

(Next printed page is 4)



EL6GM001

Figure 1. Test Set TS-3565/TRS-2.

SECTION II						TM11-6625-2784-24P		
(1)	(2)	(3)	(4)	(5)	(6)	(7)	(8)	
ILLUSTRATION								
(A)	(B)	NATIONAL			DESCRIPTION		QTY	
FIG	ITEM	STOCK	PART	FSCM		USABLE ON CODE	INC	
NO	NO	NUMBER	NUMBER				IN	
							UNIT	
					GROUP 00 TEST SET TS-3565/TRS-2			
1	1	XDFFF	SM-D-783452	56977	PANEL ASSY,TEST SET	EA	1	
1	2	XDFZZ	5305-00-059-3659	MS51958-63	96906 SCREW,MACHINE	EA	6	
1	3	XDFZZ	5310-00-933-8120	MS35338-138	96906 WASHER,LOCK	EA	6	
1	4	XDFZZ	5310-00-619-1148	MS15795-808	96906 WASHER,FLAT	EA	6	
1	5	XDFZZ	C5001328	56977	TRAY,CABLE RING	EA	1	
1	6	XDFZZ	C5001330	56977	COVER,CA RTNG TRAY	EA	1	
1	7	AFFFF	SM-C-783493	56977	CABLE ASSY,WIRE MDL	EA	1	
1	8	PAFZZ	1584-24	83330	CABLE,TRIGGER INPUT	EA	1	
1	9	PAFFF	5995-01-079-7947	SM-D-783492	56977 CABLE ASSY,SIG GEN	EA	1	
1	10	XDFFF	D11786	19178	CASE,TEST SET	EA	1	
1	11	XDDZZ	SM-C-783454	56977	PLATE,IDENT	EA	1	

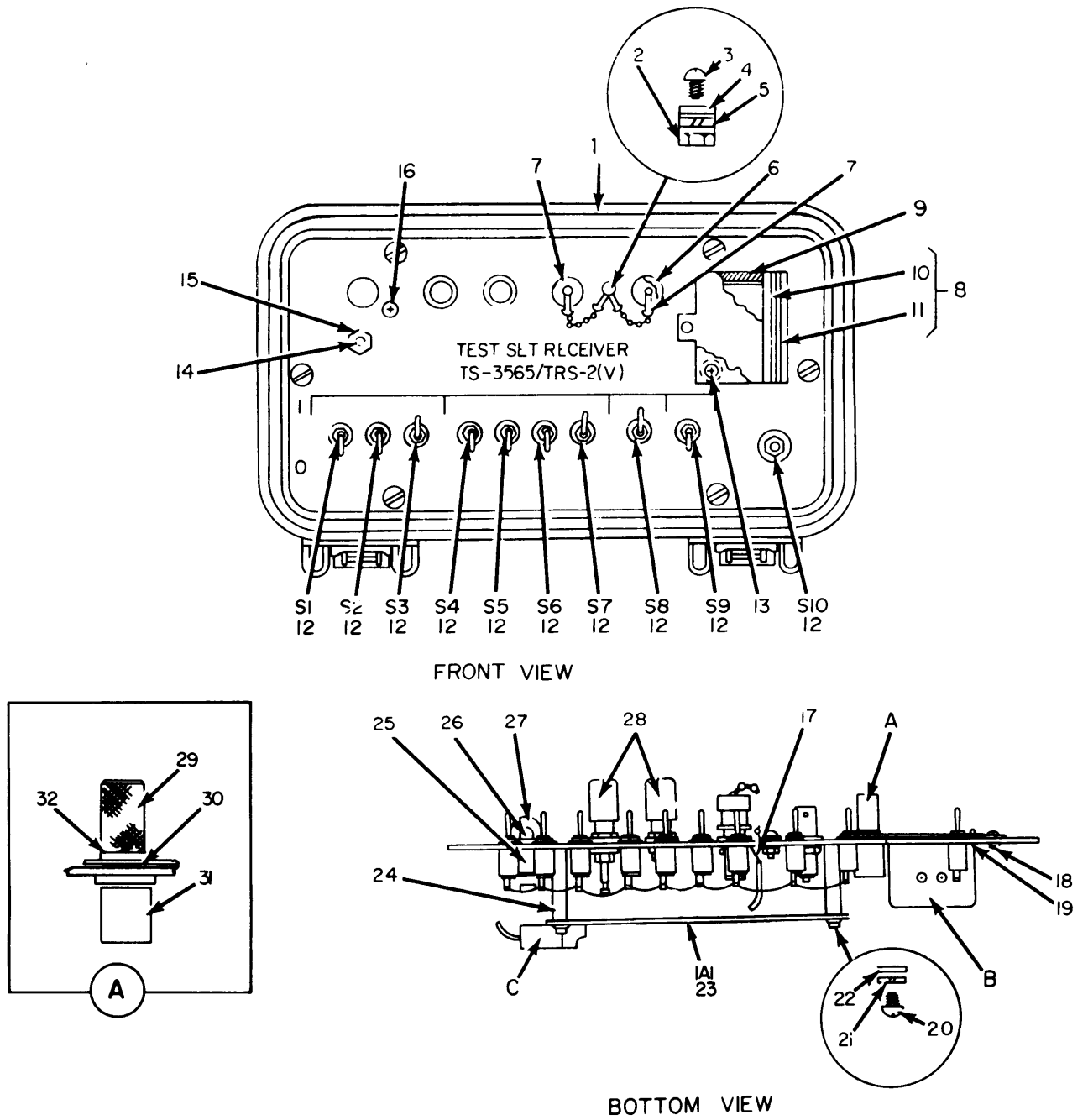
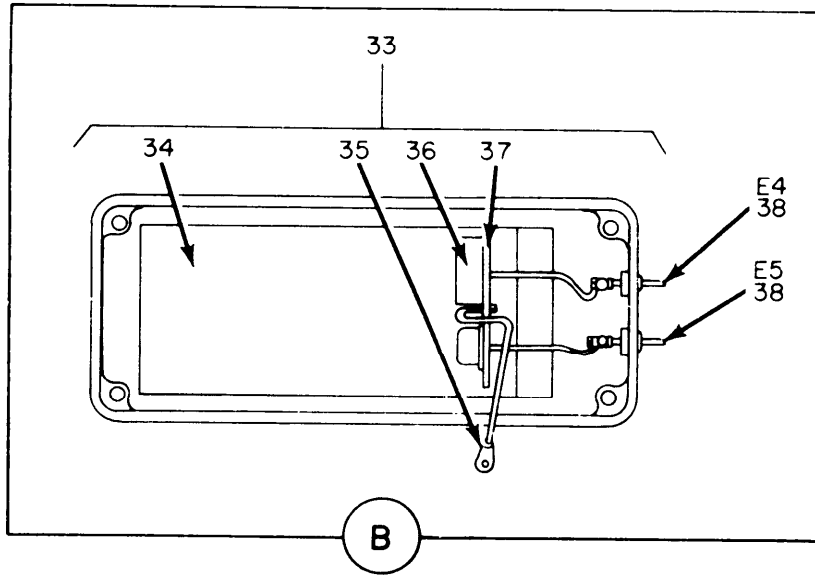
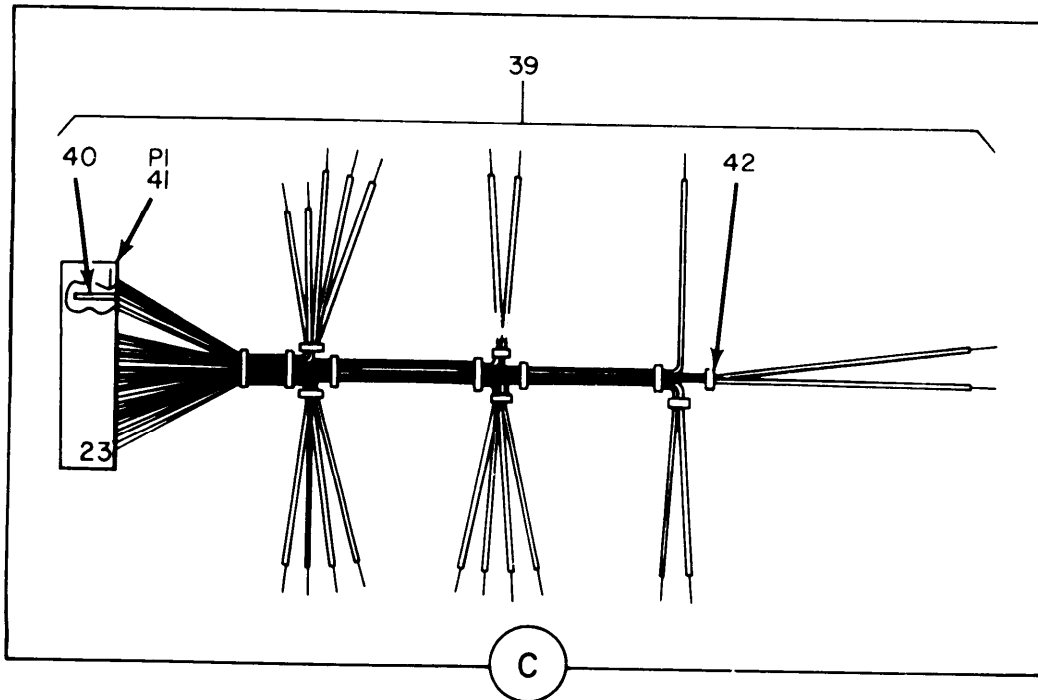


Figure 2. Panel Assembly, Test Set (Sheet 1 of 2).



BATTERY BOX ASSEMBLY



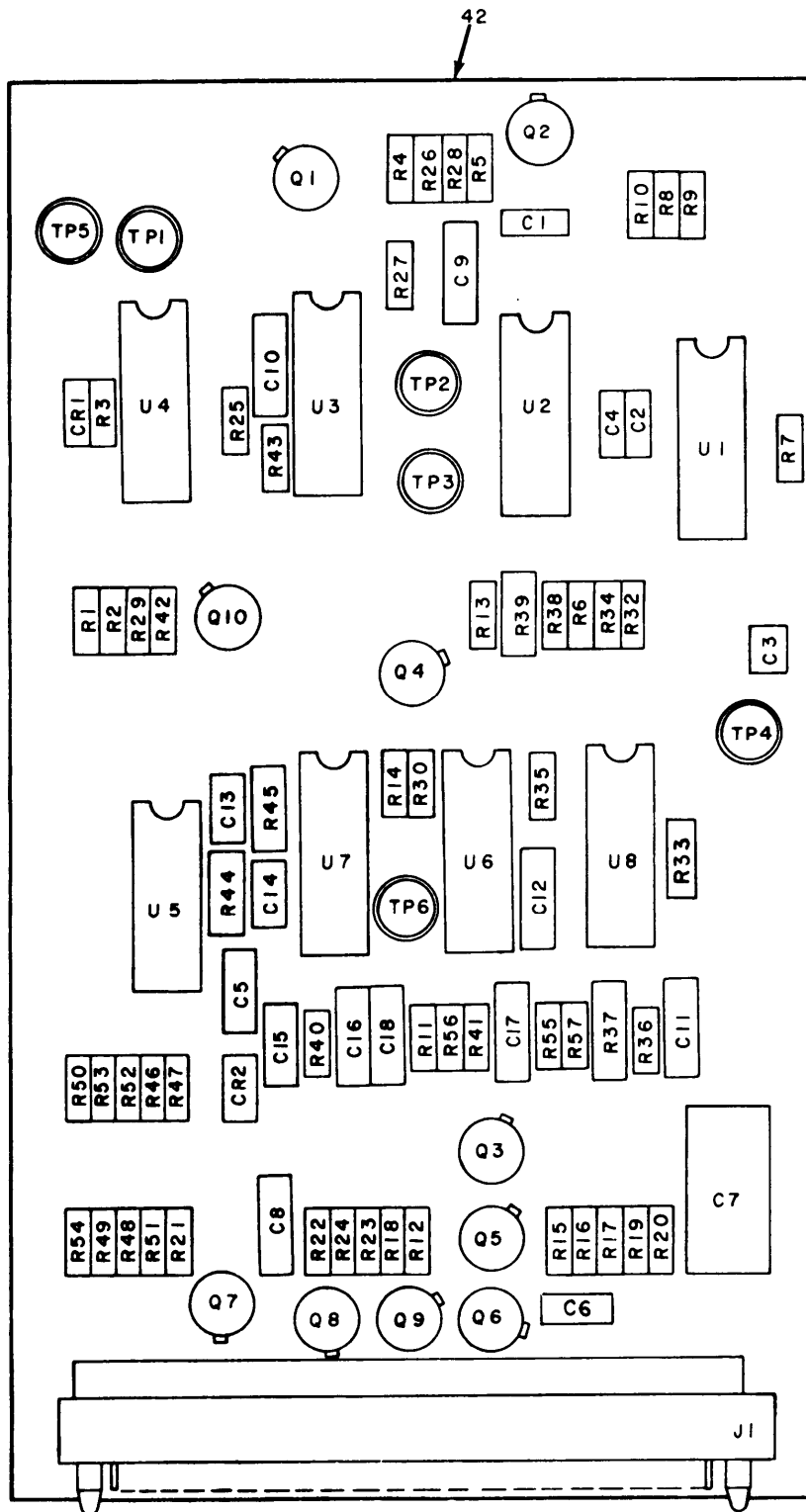
WIRING HARNESS

EL6GM003

Figure 2. Panel Assembly, Test Set (Sheet 2 of 2)

SECTION II						TM11-6625-2784-24P		
(1)	(2)	(3)	(4)	(5)	(6)	(7)	(8)	
ILLUSTRATION					DESCRIPTION		QTY	
(A)	(B)	NATIONAL	PART	FSCM		USABLE ON CODE	INC	
FIG	ITEM	STOCK	NUMBER				IN	
NO	NO	NUMBER					UNIT	
GROUP 01 PANEL ASSEMBLY, TEST SET								
2	1	XDFFF	SM-D-783453	56977	PANEL, TEST SET	EA	1	
2	2	XDFZZ	5310-00-934-9761	MS35649-264	96906 NUT, PLAIN, HEXAGON	EA	1	
2	3	XDFZZ	5305-00-054-6652	MS51957-28	96906 SCREW, MACHINE	EA	1	
2	4	XDFZZ	5310-00-880-5976	MS15795-806	96906 WASHER, FLAT	EA	1	
2	5	XDFZZ	5310-00-929-6395	MS35338-136	96906 WASHER, LOCK	EA	1	
2	6	PAFZZ	5935-00-997-8026	M39012/24-0002	81349 CONNECTOR, RECEPTACL	EA	2	
2	7	XDFZZ	5935-00-885-2264	M39012/25-0006	81349 COVER, CONNECTOR	EA	2	
2	8	XDFZZ		C5001307	56977 GASKET	EA	1	
2	9	XDFDD		C5001304	56977 COVER ASSY, BATT BOX	EA	1	
2	10	XDDZZ	5320-00-655-4757	MS20426A3-4	96906 RIVET, SOLID	EA	3	
2	11	XDDZZ		A-2221-A	71126 HINGE	EA	1	
2	12	PAFZZ	5930-00-892-9550	MS24655-221	96906 SWITCH, TOGGLE	EA	10	
2	13	XDFZZ		MS24693-BB26	96906 SCREW, FLAT HEAD	EA	4	
2	14	PAFZZ	5930-01-080-7860	C5001290	56977 PUSH BUTTON	EA	1	
2	15	PAFZZ	5930-00-687-0948	M5423/10-03	81349 BOOT, DUST AND MOIST	EA	1	
2	16	XDFZZ	5305-01-047-6239	MS24693-BB2	96906 SCREW, MACHINE	EA	4	
2	17	XDFZZ	5940-00-405-2175	814	79963 TERMINAL, LUG	EA	1	
2	18	XDFZZ	5310-00-934-9748	MS35649-244	96906 NUT, PLAIN, HEXAGON	EA	3	
2	19	XDFZZ		C5001306	56977 GASKET, BATTERY BOX	EA	1	
2	20	XDFZZ	5305-00-054-5649	MS51957-15	96906 SCREW, MACHINE	EA	7	
2	21	XDFZZ	5310-00-933-8118	MS35338-135	96906 WASHER, LOCK	EA	7	
2	22	XDFZZ	5310-00-782-1349	MS15795-804	96906 WASHER, FLAT	EA	7	
2	23	PAFDL	5895-01-081-0086	SM-D-783475	56977 CIRCUIT CARD ASSEMB	EA	1	
2	24	XDFZZ		8328	83330 POST, ELECTRICAL-MEC	EA	4	
2	25	XDFZZ	6210-00-176-4928	LH89/1	81349 HOUSING, IND-LT	EA	1	
2	26	PAFZZ		CM4-8027	71744 LAMP, LED	EA	1	
2	27	XDFZZ	6210-00-151-5358	LC35RN2	81349 LENS, LIGHT	EA	1	
2	28	XDFZZ	5940-00-937-5237	PB08NA01	81349 POST, BINDING, ELECTR	EA	2	
2	29	XDFZZ		82-13-140-16	94222 STUD, KNURLED HEAD	EA	1	
2	30	XDFZZ	5310-00-949-6139	82-32-101-20	94222 WASHER, SPLIT	EA	1	
2	31	XDFZZ		82-35-304-15	94222 RECEPTACLE, TURNLOCK	EA	1	
2	32	XDFZZ	5330-00-876-0086	82-46-101-41	94222 PACKING, PREFORMED	EA	1	
2	33	XDFFF		C5001329	56977 BOX, BATTERY ASSY	EA	1	
2	34	XDFZZ		C5001326	56977 SUPPORT ASSY, BTRY	EA	1	
2	35	XDDZZ	5940-00-683-4339	MS35431-7	96906 TERMINAL, LUG	EA	1	
2	36	XDDZZ		SM-C-783219	56977 SPACER, POLARIZING	EA	1	
2	37	XDDZZ		SM-C-783226	56977 STRAP, BATTERY	EA	1	
2	38	XDDZZ	5940-00-082-4748	FT049B01	81349 TERMINAL, FEEDTHRU	EA	2	
2	39	ADDDL		SM-D-783458	56977 HARNESS, WIRING	EA	1	

SECTION II		TM11-6625-2784-24P						
(1)	(2)	(3)	(4)	(5)	(6)	(7)	(8)	
ILLUSTRATION								
(A)	(B)		NATIONAL		DESCRIPTION		QTY	
FIG	ITEM	SMR	STOCK	PART			INC	
NO	NO	CODE	NUMBER	NUMBER	FSCM	USABLE ON CODE	U/M	
							UNIT	
2	40	XDDZZ		M21097/16-01	81349	CONTACT, ELEC	EA	23
2	41	XDDZZ		M21097/13-02	81349	CONNECTOR, RECEPTACL	EA	1
2	42	XDDZZ	5975-00-727-5153	MS3367-4-9	96906	STRAP, TIEDOWN, ELECT	EA	12



NOTE: FOR COMPLETE REFERENCE DESIGNATION
PREFIX WITH IAI

EL6GM004

Figure 3. Circuit Card Assembly, Test Set (Sheet 1 of 2).

REF. DES.	ITEM NO.	REF. DES.	ITEM NO.	REF. DES.	ITEM NO.	REF. DES.	ITEM NO.	REF. DES.	ITE NO.	REF. DES.	ITEM NO.
C1	1	C18	2	R4	18	R21	27	R39	33	R56	36
C2	1	CRI	10	R5	19	R22	28	R40	35	R57	35
C3	2	CR2	11	R6	16	R23	29	R41	36	TP1	37
C4	1	J1	12	R7	20	R24	30	R42	17	TP2	37
C5	3	Q1	13	R8	21	R25	15	R43	16	TP3	37
C6	1	Q2	13	R9	19	R26	31	R44	20	TP4	37
C7	4	Q3	14	R10	22	R27	32	R45	20	TP5	37
C8	2	Q4	13	R11	20	R28	33	R46	16	TP6	37
C9	5	Q5	13	R12	23	R29	,	R47	16	U1	38
C10	3	Q6	13	R13	21	R30	15	R48	16	U2	38
C11	6	Q7	13	R14	24	R32	15	R49	16	U3	38
C12	7	Q8	13	R15	23	R33	20	R50	16	U4	39
C13	1	Q9	14	R16	25	R34	15	R51	16	U5	40
C14	1	Q10	14	R17	25	R35	20	R52	16	U6	38
C15	8	R1	15	R18	16	R36	34	R53	16	U7	41
C16	9	R2	16	R19	2	R37	33	R54	16	U8	38
C17	2	R3	17	R20	26	R38	34	R55	35		

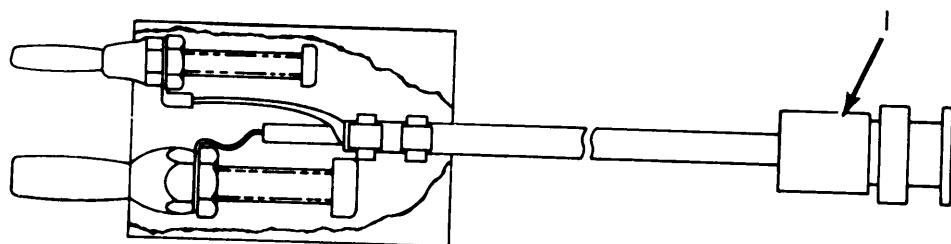
NOTE: FOR COMPLETE REFERENCE DESIGNATION PREFIX WITH IAI

EL6GM005

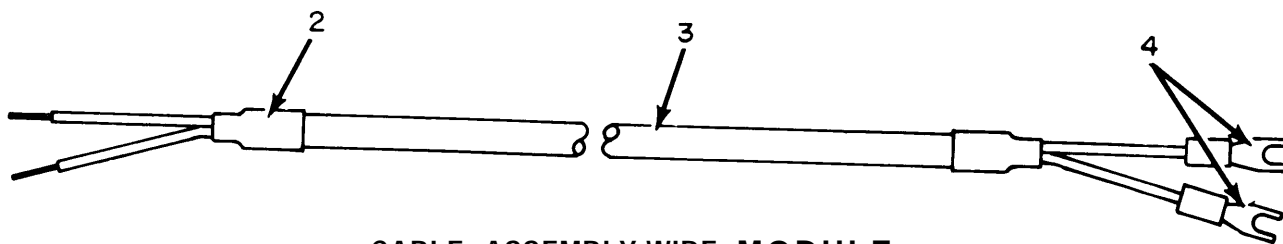
Figure 3. Circuit Card Assembly, Test Set (Sheet 2 of 2).

SECTION II (1) ILLUSTRATION		(2)	(3)	(4)	(5)	TM11-6625-2784-24P (6)	(7)	(8)
(A) FIG NO	(B) ITEM NO	SMR CODE	NATIONAL STOCK NUMBER	PART NUMBER	FSCM	DESCRIPTION	USABLE ON CODE	QTY INC IN UNIT
						GROUP 0101 CIRCUIT CARD ASSEMBLY, TEST SET		
3	1	XDDZZ	5910-00-111-4811	CK05BX103K	81349	CAPACITOR, FIXED, CER	EA	6
3	2	XDDZZ	5910-00-566-0225	M39003/01-2339	81349	CAPACITOR, FIXED, ELE	EA	4
3	3	XDDZZ		CM04FC271J03	81349	CAPACITOR, FXD, MICA	EA	2
3	4	XDDZZ	5910-00-412-9235	M39003/01-2262	81349	CAPACITOR, FIXED, ELE	EA	1
3	5	XDDZZ		SM-C-783386	56977	CAPACITOR, FXD, PLSTC	EA	1
3	6	XDDZZ	5910-01-029-8906	CMR06F102G0DR	81349	CAPACITOR, FIXED, MIC	EA	1
3	7	XDDZZ	5910-01-049-3153	CM06FD821J03	81349	CAPACITOR, FIXED, MIC	EA	1
3	8	XDDZZ	5910-00-460-0850	M39003/01-2357	81349	CAPACITOR, FIXED, ELE	EA	1
3	9	XDDZZ		M39003/01-2333	81349	CAP, FIXED, ELCTLT	EA	1
3	10	XDDZZ	5961-00-842-9864	JAN1N914	81349	SEMICONDUCTOR DEVIC	EA	1
3	11	XDDZZ		SM-C-783306	56977	SEMICONDUCTOR, DIODE	EA	1
3	12	XDDZZ		M21097/15-04	81349	CONNECTOR, PLUG, ELEC	EA	1
3	13	XDDZZ	5961-00-951-8757	JAN2N2222A	81349	TRANSISTOR	EA	7
3	14	XDDZZ	5961-00-913-1747	JAN2N2907	81349	TRANSISTOR	EA	3
3	15	XDDZZ	5905-00-119-3504	RCR07G273JS	81349	RESISTOR, FIXED, COMP	EA	5
3	16	XDDZZ	5905-00-110-0388	RCR07G104JS	81349	RESISTOR, FIXED, COMP	EA	14
3	17	XDDZZ	5905-00-118-4559	RCR07G333JS	81349	RESISTOR, FIXED, COMP	EA	2
3	18	XDDZZ	5905-00-141-0717	RCR07G473JS	81349	RESISTOR, FIXED, COMP	EA	1
3	19	XDDZZ	5905-00-485-4545	RCR07G334JS	81349	RESISTOR, FIXED, COMP	EA	2
3	20	XDDZZ	5905-00-116-8554	RCR07G105JS	81349	RESISTOR, FIXED, COMP	EA	6
3	21	XDDZZ	5905-00-114-0711	RCR07G472JS	81349	RESISTOR, FIXED, COMP	EA	2
3	22	XDDZZ	5905-00-135-3974	RCR07G431JS	81349	RESISTOR, FIXED, COMP	EA	1
3	23	XDDZZ	5905-00-120-9152	RCR07G274JS	81349	RESISTOR, FIXED, COMP	EA	2
3	24	XDDZZ	5905-00-120-9154	RCR07G471JS	81349	RESISTOR, FIXED, COMP	EA	1
3	25	XDDZZ	5905-00-112-0966	RNC55K3013FS	81349	RESISTOR, FIXED, FILM	EA	3
3	26	XDDZZ		RNC55K3653FM	81349	RESISTOR, FIXED, FILM	EA	1
3	27	XDDZZ	5905-00-104-8358	RCR07G822JS	81349	RESISTOR, FIXED, COMP	EA	1
3	28	XDDZZ	5905-00-105-7765	RCR07G224JS	81349	RESISTOR, FIXED, COMP	EA	1
3	29	XDDZZ	5905-00-106-1357	RCR07G563JS	81349	RESISTOR, FIXED, COMP	EA	1
3	30	XDDZZ	5905-00-111-1682	RCR07G163JS	81349	RESISTOR, FIXED, COMP	EA	1
3	31	XDDZZ	5905-00-104-8357	RCR07G684JS	81349	RESISTOR, FIXED, COMP	EA	1
3	32	XDDZZ	5905-00-200-9588	RNC55K2493FM	81349	RESISTOR, FIXED, FILM	EA	1
3	33	XDDZZ		RJ24CW104M	81349	RESISTOR, VARIABLE	EA	3
3	34	XDDZZ	5905-00-758-3115	RNC55K2003FS	81349	RESISTOR, FIXED, FIL	EA	2
3	35	XDDZZ	5905-00-105-7764	RCR07G222JS	81349	RESISTOR, FIXED, COMP	EA	3
3	36	XDDZZ	5905-00-110-7622	RCR07G682JS	81349	RESISTOR, FIXED, COMP	EA	2
3	37	XDDZZ	5940-00-082-5002	SE16XC01	81349	TERMINAL, STUD	EA	6
3	38	XDDZZ	5962-01-025-2594	M38510/05202BCA	81349	INTEGRATED CIRCUIT	EA	5
3	39	XDDZZ	5962-01-015-3896	M38510/05102BEA	81349	INTEGRATED CIRCUIT	EA	1

SECTION II		TM11-6625-2784-24P						
(1)	(2)	(3)	(4)	(5)	(6)	(7)	(8)	
ILLUSTRATION					DESCRIPTION		QTY	
(A)	(B)	NATIONAL					INC	
FIG	ITEM	STOCK	PART	FSCM		USABLE ON CODE	IN	
NO	NO	CODE	NUMBER				UNIT	
3	40	XDDZZ	5962-00-628-6132	M38510/05601BEA	81349	INTEGRATED CIRCUIT	EA 1	
3	41	XDDZZ	5962-00-513-0528	M38510/05001BCA	81349	INTEGRATED CIRCUIT	EA 1	
3	42	XDDZZ		SM-D-783478	56977	PRINTED WIRING BD	EA 1	



CABLE ASSEMBLY, SIGNAL GENERATOR

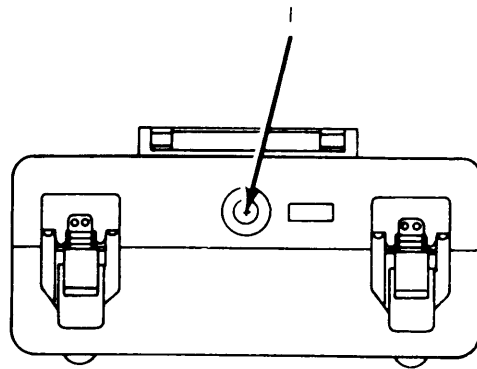


CABLE ASSEMBLY, WIRE MODULE

EL6GM006

Figure 4. Cable Assembly, Signal Generator.

SECTION II						TM11-6625-2784-24P		
(1)	(2)	(3)	(4)	(5)	(6)	(7)	(8)	
ILLUSTRATION								
(A)	(B)	NATIONAL			DESCRIPTION		QTY	
FIG	ITEM	STOCK	PART				INC	
NO	NO	CODE	NUMBER	FSCM		USABLE ON CODE	IN	
							UNIT	
					GROUP 02 CABLE ASSEMBLY, SIGNAL GENERATOR			
4	1	XDFZZ	5935-00-051-2589	M39012/15-0002	81349 CONNECTOR, PLUG, ELEC	EA	1	
4	2	PAFZZ	5970-00-983-7962	M23053/5	81349 INSULATION SLEEVING	FT	1	
4	3	PAFZZ	6145-00-635-3033	8412	70903 CABLE, SPECIAL PURPO	FT	1	
4	4	PAFZZ	5940-00-636-5593	34541	00779 TERMINAL, LUG	EA	2	



EL6GM007

Figure 5. Case, Test Set.

SECTION II									
(1)	(2)	(3)	(4)	(5)	TM11-6625-2784-24P			(7)	(8)
ILLUSTRATION					(6)				QTY
(A)	(B)	SMR	NATIONAL		DESCRIPTION				INC
FIG	ITEM	CODE	STOCK	PART					IN
NO	NO		NUMBER	NUMBER	FSCM		USABLE ON CODE	U/M	UNIT
						GROUP 04 CASE, TEST SET			
5	1	PAFZZ	4820-00-898-3003	ZSP6-037-4	19178	VALVE, VACUUM BREAKI		EA	1

NOTE: LATEST NATIONAL STOCK NUMBER AND PART NUMBER ASSIGNMENTS ARE INCLUDED AT END OF INDEX

STOCK NUMBER	FIGURE NO	ITEM NO	STOCK NUMBER	FIGURE NO	ITEM NO
5935-00-051-2589	4	1	5962-00-628-6132	3	40
5305-00-054-5649	2	20	6145-00-635-3033	4	3
5305-00-054-6652	2	3	5940-00-636-5593	4	4
5305-00-059-3659	1	2	5320-00-655-4757	2	10
5940-00-082-4748	2	38	5940-00-683-4339	2	35
5940-00-082-5002	3	37	5930-00-687-0948	2	15
5905-00-104-8357	3	31	5975-00-727-5153	2	42
5905-00-104-8358	3	27	5905-00-758-3115	3	34
5905-00-105-7764	3	35	5310-00-782-1349	2	22
5905-00-105-7765	3	28	5961-00-842-9864	3	10
5905-00-106-1357	3	29	5330-00-876-0086	2	32
5905-00-110-0388	3	16	5310-00-880-5976	2	4
5905-00-110-7622	3	36	5935-00-885-2264	2	7
5905-00-111-1682	3	30	5930-00-892-9550	2	12
5910-00-111-4811	3	1	4820-00-898-3003	5	1
5905-00-112-0966	3	25	5961-00-913-1747	3	14
5905-00-114-0711	3	21	5310-00-929-6395	2	5
5905-00-116-8554	3	20	5310-00-933-8118	2	21
5905-00-118-4559	3	17	5310-00-933-8120	1	3
5905-00-119-3504	3	15	5310-00-934-9748	2	18
5905-00-120-9152	3	23	5310-00-934-9761	2	2
5905-00-120-9154	3	24	5940-00-937-5237	2	28
5905-00-135-3974	3	22	5310-00-949-6139	2	30
5905-00-141-0717	3	18	5961-00-951-8757	3	13
6210-00-151-5358	2	27	5935-00-997-8026	2	6
6210-00-176-4928	2	25	5962-01-015-3896	3	39
5905-00-200-9588	3	32	5962-01-025-2594	3	38
5940-00-405-2175	2	17	5910-01-029-8906	3	6
5910-00-412-9235	3	4	5305-01-047-6239	2	16
5910-00-460-0850	3	8	5910-01-049-3153	3	7
5905-00-485-4545	3	19	5995-01-079-7947	1	9
5962-00-513-0528	3	41	5930-01-080-7860	2	14
5910-00-566-0225	3	2	5895-01-081-0086	2	23
5310-00-619-1148	1	4			

PART NUMBER	FSCM	FIG NO	ITEM NO	PART NUMBER	FSCM	FIG NO	ITEM NO
A-2221-A	71126	2	11	M38510/05001BCA	81349	3	41
CK05BX103K	81349	3	1	M38510/05102BEA	81349	3	39
CMR06F102G0DR	81349	3	6	M38510/05202BCA	81349	3	38
CM04FC271J03	81349	3	3	M38510/05601BEA	81349	3	40
CM06FD821J03	81349	3	7	M39003/01-2262	81349	3	4
CM4-8027	71744	2	26	M39003/01-2333	81349	3	9
C5001290	56977	2	14	M39003/01-2339	81349	3	2
C5001304	56977	2	9	M39003/01-2357	81349	3	8
C5001306	56977	2	19	M39012/15-0002	81349	4	1
C5001307	56977	2	8	M39012/24-0002	81349	2	6
C5001326	56977	2	34	M39012/25-0006	81349	2	7
C5001328	56977	1	5	M5423/10-03	81349	2	15
C5001329	56977	2	33	PB08NA01	81349	2	28
C5001330	56977	1	6	RCR07G104JS	81349	3	
D11786	19178	1	10	RCR07G105JS	81349	3	20
FT049B01	81349	2	38	RCR07G163JS	81349	3	30
JAN1N914	81349	3	10	RCR07G222JS	81349	3	35
JAN2N2222A	81349	3	13	RCR07G224JS	81349	3	28
JAN2N2907	81349	3	14	RCR07G273JS	81349	3	15
LC35RN2	81349	2	27	RCR07G274JS	81349	3	23
LH89/1	81349	2	25	RCR07G333JS	81349	3	17
MS15795-804	96906	2	22	RCR07G334JS	81349	3	19
MS15795-806	96906	2	4	RCR07G431JS	81349	3	22
MS15795-808	96906	1	4	RCR07G471JS	81349	3	24
MS20426A3-4	96906	2	10	RCR07G472JS	81349	3	21
MS24655-221	96906	2	12	RCR07G473JS	81349	3	18
MS24693-BB2	96906	2	16	RCR07G563JS	81349	3	29
MS24693-BB26	96906	2	13	RCR07G682JS	81349	3	36
MS3367-4-9	96906	2	42	RCR07G684JS	81349	3	31
MS35338-135	96906	2	21	RCR07G822JS	81349	3	27
MS35338-136	96906	2	5	RJ24CW104M	81349	3	33
MS35338-138	96906	1	3	RNC55K2003FS	81349	3	34
MS35431-7	96906	2	35	RNC55K2493FM	81349	3	32
MS35649-244	96906	2	18	RNC55K3013FS	81349	3	25
MS35649-264	96906	2	2	RNC55K3653FM	81349	3	26
MS51957-15	96906	2	20	SE16XC01	81349	3	37
MS51957-28	96906	2	3	SM-C-783219	56977	2	36
MS51958-63	96906	1	2	SM-C-783226	56977	2	37
M21097/13-02	81349	2	41	SM-C-783306	56977	3	11
M21097/15-04	81349	3	12	SM-C-783386	56977	3	5
M21097/16-01	81349	2	40	SM-C-783454	56977	1	11

PART NUMBER	FSCM	FIG NO	ITEM NO	PART NUMBER	FSCM	FIG NO	ITEM NO
SM-C-783493	56977	1	7	34541	00779	4	4
SM-D-783452	56977	1	1	814	79963	2	17
SM-D-783453	56977	2	1	82-13-140-16	94222	2	29
SM-D-783458	56977	2	39	82-32-101-20	94222	2	30
SM-D-783475	56977	2	23	82-35-304-15	94222	2	31
SM-D-783478	56977	3	42	82-46-101-41	94222	2	32
SM-D-783492	56977	1	9	8328	83330	2	24
ZSP6-037-4	19178	5	1	8412	70903	4	3
1584-24	83330	1	8				

LATEST NATIONAL STOCK NUMBER ASSIGNMENT

STOCK NUMBER	FIGURE NO	ITEM NO
5970-00-983-7962	4	2

LATEST PART NUMBER ASSIGNMENT

PART NUMBER	FSCM	FIG NO	ITEM NO
M23053/5	81349	4	2



THEN JOT DOWN THE DOPE ABOUT IT ON THIS FORM. CAREFULLY TEAR IT OUT. FOLD IT AND DROP IT IN THE MAIL.

SOMETHING WRONG WITH THIS PUBLICATION?

FROM (PRINT YOUR UNIT'S COMPLETE ADDRESS)
 Commander
 Stateside Army Depot
 ATTN: AMSTA-US
 Stateside, N.J. 07703

DATE SENT
 10 July 1975

PUBLICATION NUMBER: TM 11-5840-340-20P
 PUBLICATION DATE: 23 Jan 78
 PUBLICATION TITLE: Radar Set AN/PRC-76

BE EXACT PIN-POINT WHERE IT IS				IN THIS SPACE TELL WHAT IS WRONG AND WHAT SHOULD BE DONE ABOUT IT:
PAGE NO	PARA-GRAPH	FIGURE NO	TABLE NO	
33				For item 2, change the NSN to read: 5835-00-134-9186. Reason: Accuracy.
44		19		Identify the cover on the junction box (item no. 5). Reason: It is a separate item and is not called out on figure 19.
45				Add the cover of the junction box as an item in the listing for figure 19. Reason: Same as above

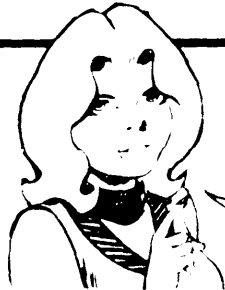
SAMPLE

PRINTED NAME GRADE OR TITLE AND TELEPHONE NUMBER
 SSG I. M. DeSpirit of 999-1776

SIGN HERE

1148 LONG PERFORATED LINE

RECOMMENDED CHANGES TO EQUIPMENT TECHNICAL PUBLICATIONS



SOMETHING WRONG WITH THIS PUBLICATION?

THEN JOT DOWN THE DOPE ABOUT IT ON THIS FORM CAREFULLY TEAR IT OUT FOLD IT AND DROP IT IN THE MAIL

FROM (PRINT YOUR UNIT'S COMPLETE ADDRESS)

DATE SENT

PUBLICATION NUMBER

TM 11-6625-2784-24P

PUBLICATION DATE

PUBLICATION TITLE

Test Set TS-3565/TRS-2

BE EXACT PIN POINT WHERE IT IS

PAGE NO.	PARA GRAPH	FIGURE NO.	TABLE NO.
----------	------------	------------	-----------

IN THIS SPACE TELL WHAT IS WRONG AND WHAT SHOULD BE DONE ABOUT IT:

PRINT NAME, GRADE OR TITLE AND TELEPHONE NUMBER

SIGN HERE

DA FORM 2028-2

PREVIOUS EDITIONS ARE OBSOLETE

P.S. IF YOUR OUTFIT WANTS TO KNOW ABOUT YOUR RECOMMENDATION MAKE A CARBON COPY OF THIS AND GIVE IT TO YOUR HEADQUARTERS

By Order of the Secretary of the Army:

E. C. MEYER
General, United States Army
Chief of Staff

Official:

J. C. PENNINGTON
Major General, United States Army
The Adjutant General

DISTRIBUTION:

Active Army

HISA (Ft Monmouth) (21)
USAINSCOM (2)
COE (1)
USAARENBD (1)
TSG (1)
DARCOM (1)
TRADOC (2)
OS MAJ COMD (4)
TECOM (2)
USACC (4)
MDW (1)
Armies (2)
Corps (2)
Svc collages (1)
USASIGS (5)
USAADS (2)
USAFAS (2)
USAARMS (2)
USASIS (2)
USAICS (2)
USAES (2)

MAAG (1)
USARMIS (1)
USAERDAA (1)
USAERDAW (1)
Ft Carson (10)
Ft Gillem (10)
Ft Gordon (10)
Ft Richardson (CERCOM Ofc) (2)
USA Dep (1)
Sig Sec USA (1)
Army Dep (1) except)
SAAD (30)
SHAD (2)
TOAD (14)
Units org under fol toe
29-207 (2)
29-610 (2)

ARNG: None

USAR: None

For explanation of abbreviations used, see AR 310-50